

# **BEFCO®**

## **Parts Manual**

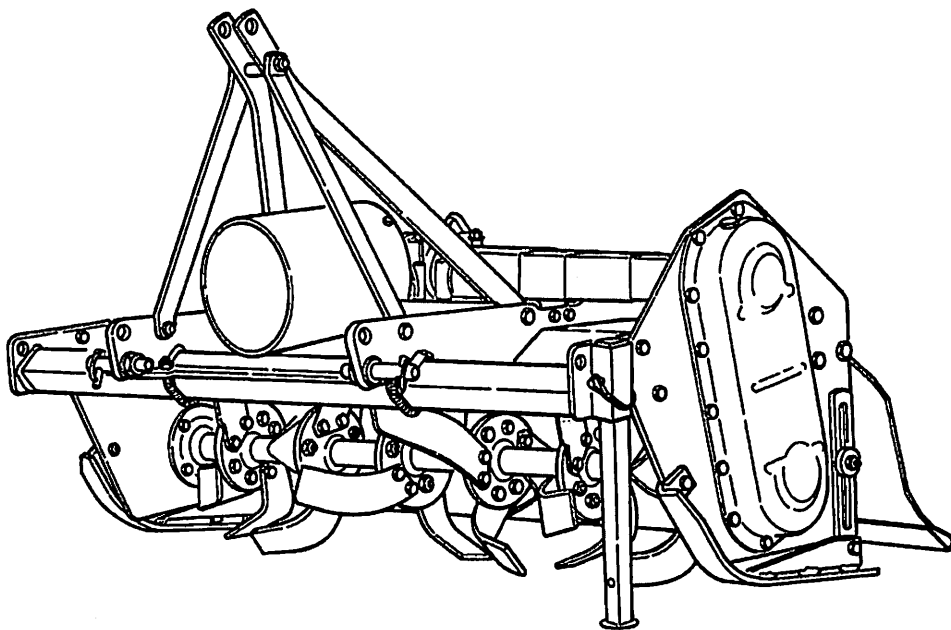
### **TILL-RITE**

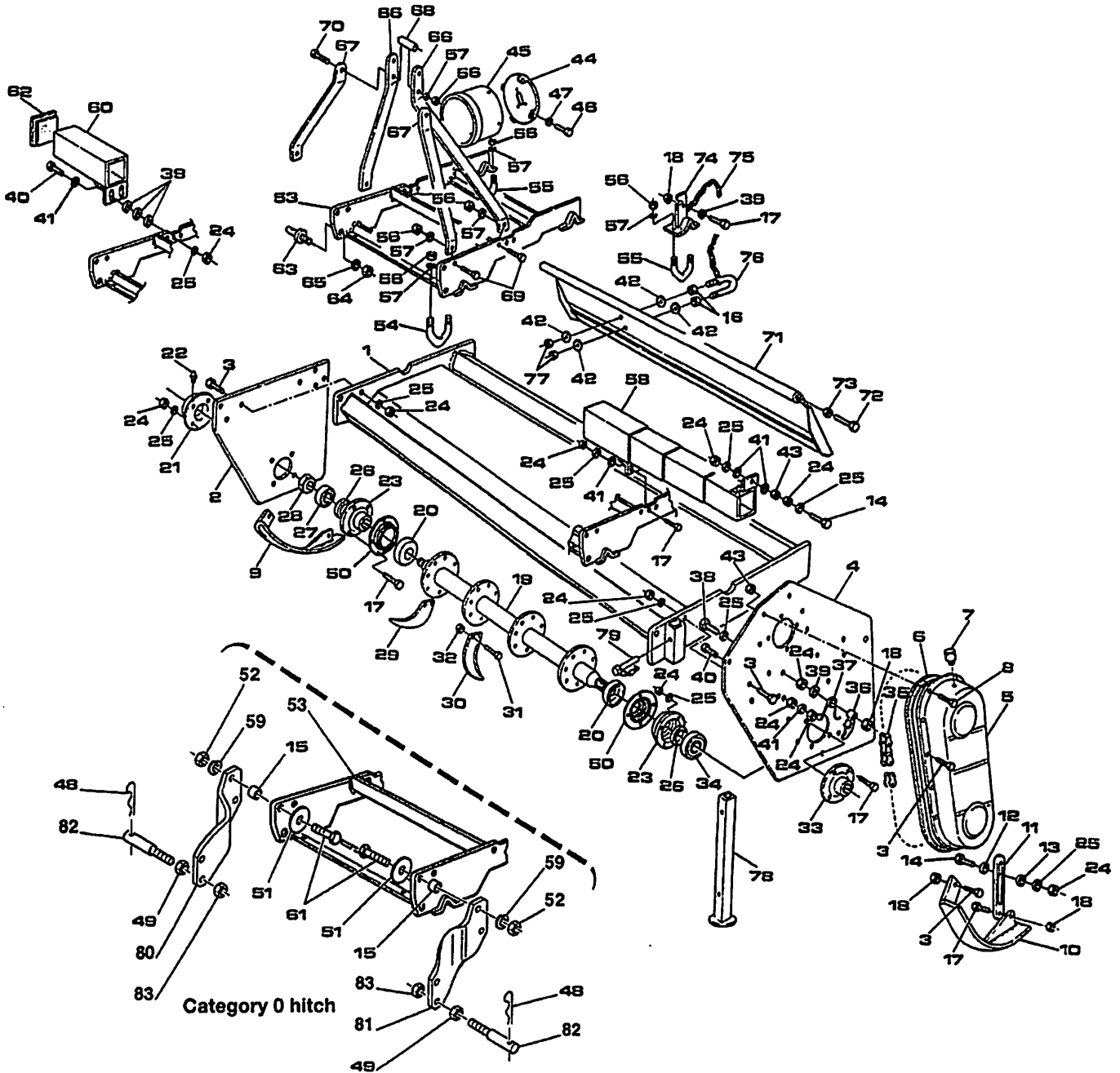
**Side-Shift Rotary Tiller**

**T30-134, 234, 534**

**T30-142, 242, 542**

**T30-150, 250, 550**



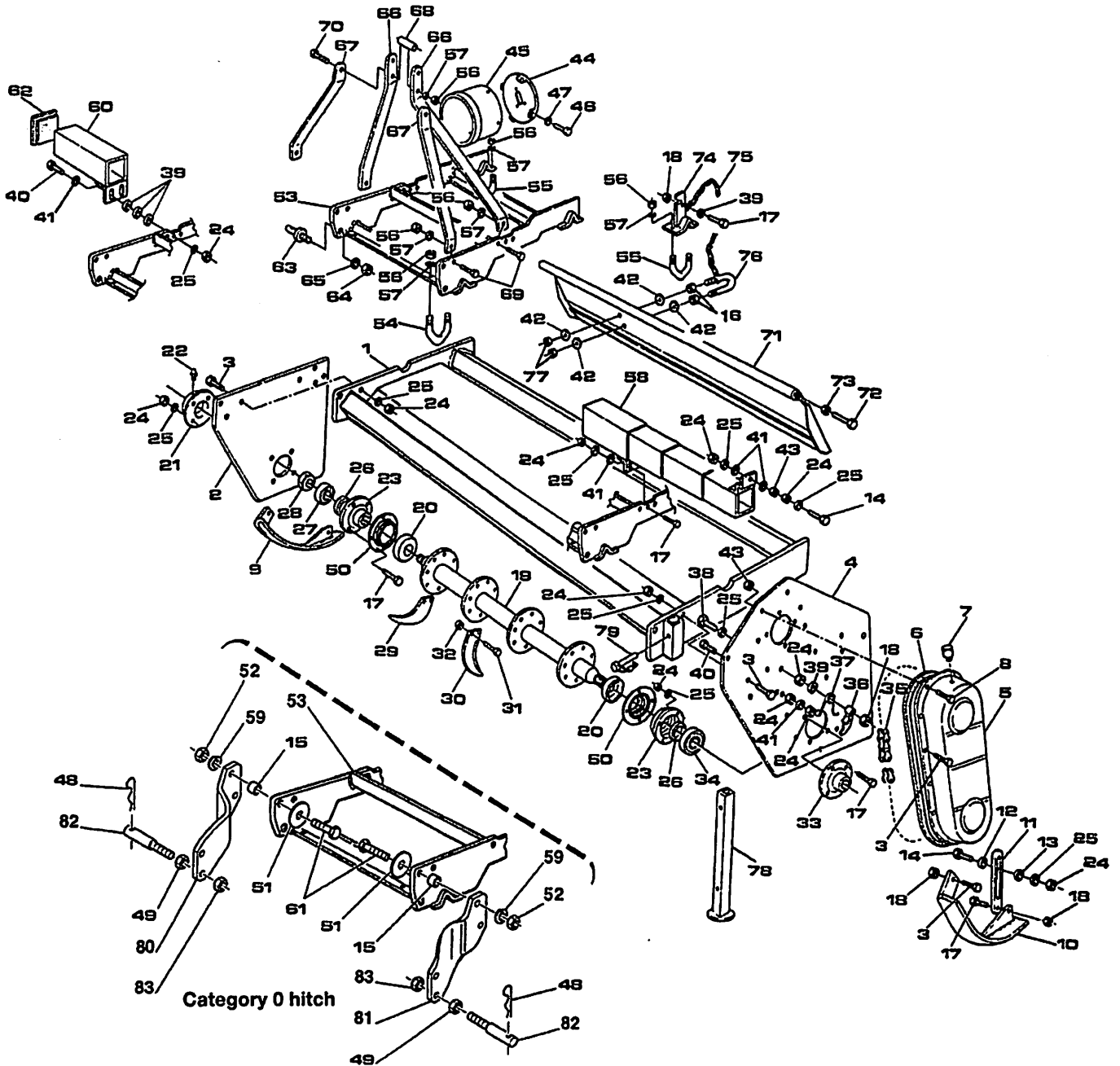


T30-134, 234, 534, 142, 242, 542, 150, 250, 550

Ref.	Part #	Description	Qty.
1	011-1002	Frame 34"	1
	021-1002	Frame 42"	1
	031-1002	Frame 50"	1
2	001-1011	Side panel, right	1
3	003-3176	Bolt HH M10-1.50x25 C8.8 Z F	14
4	001-1021	Drive panel	1
5	001-1030	Cover, chain case	1
6	002-2032	Gasket, chain case cover	1
7	000-1107A	Breather cap	1
8	000-6349	Bolt HH M10-1.50x20 C8.8 Z F	12
9	011-1041	Skid, right	1
10	021-1041	Skid, left	1
11	002-1051	Adjustment arm	2
12	002-1052	Washer threaded Ø10 Z	2
13	002-1053	Washer w/hole Ø10 Z	2
14	003-0331	Bolt HH M10-1.50x50 C8.8 Z F	2
15	001-1388	Spacer until 06/1998	2
16	004-6545	Nut HH M08-1.25 C6 Z MD	2
17	000-1278	Bolt HH M10-1.50x30 C8.8 Z F	13
18	003-0156	Nut PT M10-1.50 C6 Z	6
19	013-4081	Rotor 34"	1
	023-4081	Rotor 42"	1
	033-4081	Rotor 50"	1
20	002-2074	Dirt shield (requires welding)	2
21	003-0091	Outer cover, right	1
22	000-1065	Grease fitting M10-1.00 threaded	1
23	003-0092	Inner cover	2
24	000-1279	Nut HH M10-1.50 C6 Z TK	29
25	000-1280	Washer lock Ø10 Z	27
26	003-4098	Oil seal 40.60.10	2
27	003-0094	Bearing 6306	1
28	003-0095	Locking ring ES GUK M30-1.50	1
29	003-0104D	Tine "C" style, right <sup>13</sup>	-
30	003-0104S	Tine "C" style, left <sup>14</sup>	-
31	002-1104	Bolt HH M12-1.25x30 C8.8 Z P	-
32	002-1105	Nut PT M12-1.25 C6 Z	-
33	001-0102	Outer cover, lower left	1
34	002-5332A	Bearing 6207	1
35	001-0125	Chain ASA 60HEx46 (540 rpm); T30-134, 234, 142, 242, 150, 250	1
	001-1124	Chain ASA 60Ex47 (2000 rpm); T30-534, 542, 550	1
36	003-0148	Chain tensioner	1
37	003-0158	Spring, chain tensioner	1
38	003-0640	Bolt HH M10-1.50x65 C8.8 Z F	1
39	003-0157	Washer flat Ø10 Z	8
40	002-6329	Bolt HH M10-1.50x45 C8.8 Z F	3
41	000-2034	Washer flat Ø10 Z	7
42	001-5230	Washer flat Ø08 Z	4
43	009-0150	Nut HH M10-1.50 C6 Z MD	15
44	001-1201	Support, guard	1
45	001-1207	Guard, PTO shaft	1
46	001-1210	Bolt PN M6-1.00x12 C4.8 Z F	4
47	001-1209	Washer fender Ø06 Z	4
48	009-1507	Hairpin cotter Ø4 Z	2
49	000-3124	Nut HH M16-2.00 C6 Z MD	2
50	001-0073	Cover	2
51	007-6106	Washer fender Ø12 Z; until 06/1998	2
52	003-0064	Nut PT M12-1.75 C6 Z TK; until 06/1998	4
	000-5507	Nut PT M20-2.50 C6 Z TK; since 06/1998	4

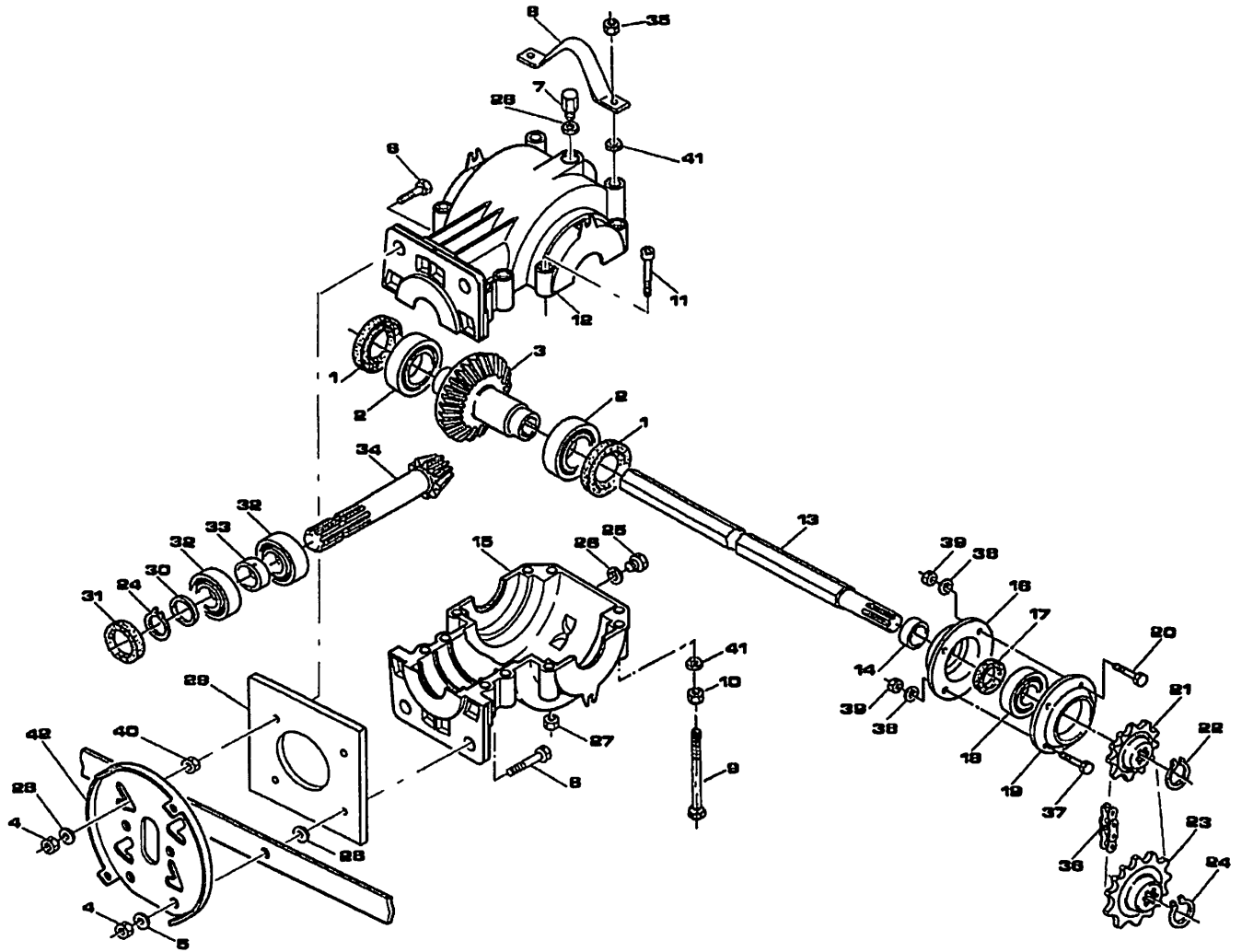
<sup>13</sup> Blades must be purchased in pairs (right and left tines).

<sup>14</sup> Blades must be purchased in pairs (right and left tines).



T30-134, 234, 534, 142, 242, 542, 150, 250, 550

Ref.	Part #	Description	Qty.
53	001-1241	Side shift complete; Ver. C & below	1
	001-1231	Side shift complete; Ver. D & above	1
	001-1278	Extension, lower hitch (option not shown on image)	2
54	001-1251	Bolt "V" M12-1.75x67x73 Z	2
55	001-1253	Bolt "V" M12-1.75x54x65 Z	3
56	000-3038	Nut HH M12-1.75 C6 Z TK	15
57	000-1077	Washer lock Ø12 Z	15
58	011-1260	Telescopic shielding 34"-42"; T30-X34, X42	1
	021-1260	Telescopic shielding 50"; T30-X50	1
59	000-1077	Washer lock Ø12 Z; until 06/1998	2
60	011-1265	Right protection 34"-42"; T30-X34, X42	1
	021-1265	Right protection 50"; T30-X50	1
61	003-0054	Bolt HH M12-1.75x50 C8.8 Z F; until 06/1998	4
	000-5540	Bolt HH M20-2.50x55 C8.8 Z F; since 06/1998	4
62	005-8330	Plastic cap 60 mm.	1
63	000-5550	Hitch pin	2
64	000-5542	Nut HH M20-1.50 C6 Z MD	2
65	000-5351	Washer lock Ø20 Z	2
66	001-1282	Arm, top hitch cat. 1	2
	001-1385	Arm, top hitch cat. 0 (option)	2
67	001-1283	Support, top hitch cat. 1	2
	001-1386	Support, top hitch cat. 0 (option)	2
68	002-1285	Spacer cat. 1	1
	001-1398	Spacer cat. 0 (option)	1
69	002-3265	Bolt HH M12-1.75x40 C8.8 Z F	4
70	001-1292	Bolt HH M12-1.75x110 C8.8 Z P	1
71	018-6399	Tailgate 34"; T30-X34	1
	028-6399	Tailgate 42"; T30-X42	1
	038-6399	Tailgate 50"; T30-X50	1
72	003-0309	Bolt HH M16-2.00x70 C8.8 Z F	2
73	000-3124	Nut HH M16-2.00 C6 Z MD	2
74	001-1311	Chain hitch	1
75	001-0318	Chain	1
76	001-1327	Bolt "U" M08-1.25x21x51 Z	1
77	001-1328	Nut PT M08-1.25 C6 N	2
78	001-1332	Stand	1
79	001-1333	Lynch pin Ø10x70	1
80	011-1401	Hitch plate, right cat. 0 (option)	1
81	021-1401	Hitch plate, left cat. 0 (option)	1
82	001-1403	Hitch pin	2
83	004-1165	Nut ES M16-2.00 Z TN	2
	950-109B	Decal "Danger PTO"	1
	950-209B	Decal "Danger rotating blades"	1
	950-486B	Decal "Danger moving parts"	1
	950-417B	Decal "Caution avoid injury"	1
	937-0160	Decal "Side-Shift"	1
	950-107B	Decal "Befco"	1
	950-226B	Decal "B"	1
	950-381B	Decal "Befco, Inc." address	1
	950-230B	Decal "T30"	1
	950-297B	Decal "134"	-
	950-236B	Decal "142"	-
	950-237B	Decal "150"	-
	950-161B	Decal "234"	-
	950-239B	Decal "242"	-
	950-240B	Decal "250"	-
	950-330B	Decal "534"	-
	950-295B	Decal "542"	-
	950-296B	Decal "550"	-
	971-100B	Operator's & Parts Manual "T30-134, 142, 150, 234, 242, 250, 534, 542, 550"	1

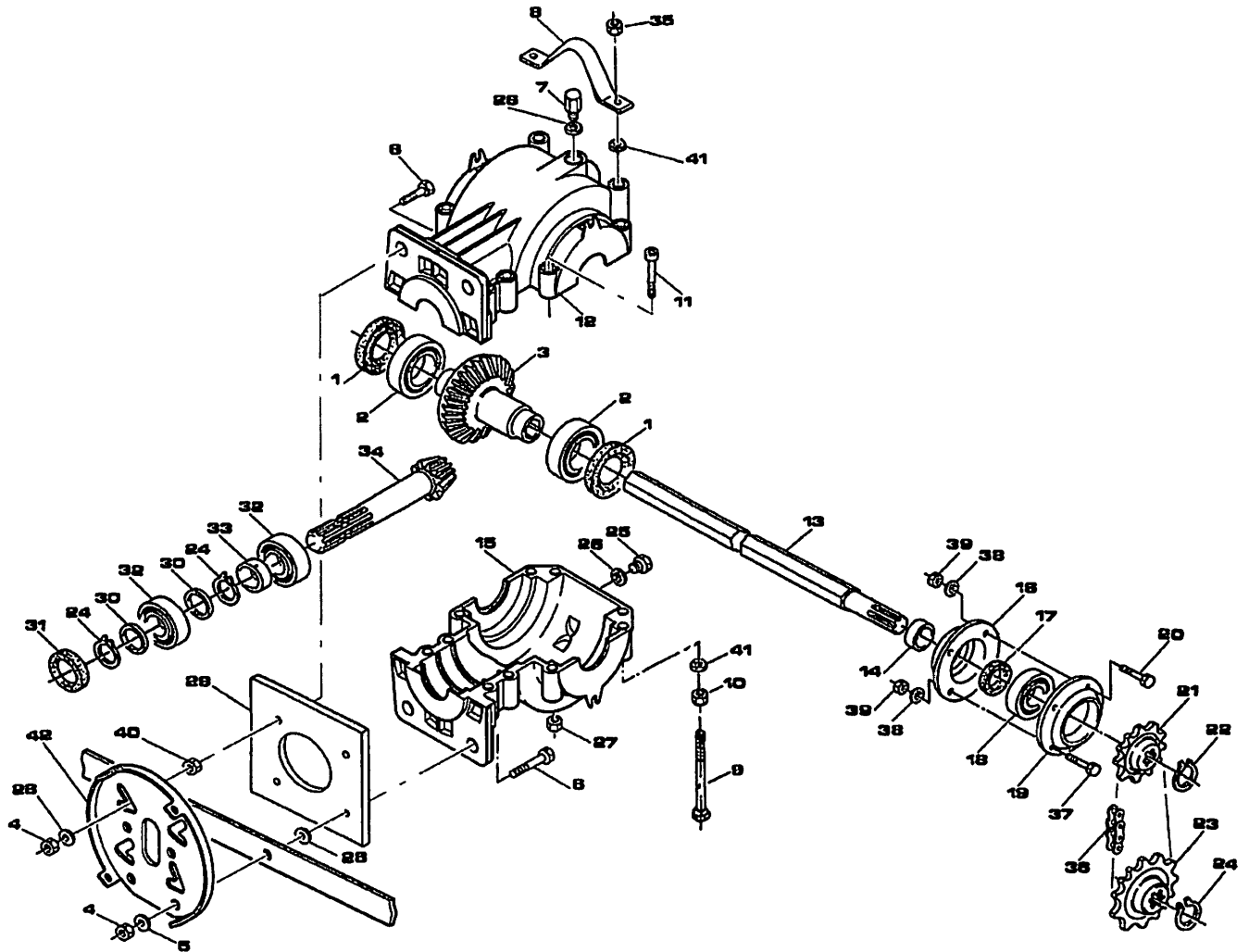


Ref.	Part #	Description	Qty.
1	001-0192	Oil seal 40.68.10	2
2	001-2149A	Bearing 6208	2
3	001-0182	Ring gear Z23, complete	1
4	000-1106	Nut HH M12-1.75 C6 Z MD	4
5	000-1077	Washer lock Ø12 Z	2
6	003-0054	Bolt HH M12-1.75x50 C8.8 Z F	4
7	001-0177	Breather cap	1
8	001-0175	Lift plate; Ver. C & below	1
	001-0176	Lift plate; Ver. D & above	1
9	010-1215	Bolt HH M10-1.50 x 140 8.8 Z P	2
10	000-3038	Nut HH M12-1.75 C6 Z TK	2
11	001-0171	Bolt SC M08-1.25 x 50 C8.8 Z P	8
12	001-0164	Housing w/center fill hole, gearbox; Ver. B & below	1
	001-1421	Housing w/fins w/fill hole, gearbox; Ver. C only	1
	001-1423	Housing w/fill hole, gearbox; Ver. D & above	1
13	011-0158	Hexagonal shaft 34"	-
	021-0158	Hexagonal shaft 42"	-
	031-0158	Hexagonal shaft 50"	-
14	001-0148	Spacer	1
15	330-0101	Housing w/center fill hole, gearbox; Ver. B & below	1
	005-1896	Housing w/fins w/o fill hole, gearbox; Ver. C only	1
	005-6681	Housing w/o fill hole, gearbox; Ver. D & above	1
16	003-0092	Inner cover	1
17	003-4098	Oil seal 40.60.10	1
18	003-0094	Bearing 6306	1
19	001-0143	Outer cover, upper left	1
20	002-6329	Bolt HH M10-1.50x45 C8.8 Z F	1
21	001-1118	Sprocket Z14	1
22	001-0122	Snap ring, outer Ø30	1
23	001-0112	Sprocket Z16	1
24	004-2122	Snap ring, outer Ø35	2
25	001-0727	Breather cap; Ver. B & below	1
26	000-8601	Gasket, breather cap; Ver. B & below	1
27	000-1806	Nut HH M08-1.25 C6 Z TK	8
28	007-6106	Washer fender Ø12 Z	4
29	001-0168	Front cover, gearbox	1
30	003-4196	Shim Ø35x45x2.5	1
31	000-2295	Oil seal 35.62.10	1
32	002-5332A	Bearing 6207	2
33	001-0196	Spacer	1
34	001-0187	Pinion gear	1
35	003-0156	Nut PT M10-1.50 C6 Z TK	2
36	001-0125	Chain ASA 60HEx46	1
	001-0126B	Chain link, master ASA 60HE	-
	001-1119	Chain link, inner ASA 60HE	-
	001-1120	Chain link, false ASA 60HE	-
37	003-3176	Bolt HH M10-1.50x25 C 8.8 Z F	3
38	000-1280	Washer lock Ø10 Z	4
39	000-1279	Nut HH M10-1.50 C6 Z TK	4
40	000-1177	Nut HH M14-2.00 C6 Z MD	2
41	000-2034	Washer flat Ø10 Z	4
42	001-1201	Support, guard	1
	050-0604	Gearbox 540 rpm complete; Ver. B & below <sup>15</sup>	-
	050-0660	Gearbox 540 rpm complete; Ver. C only <sup>16</sup>	-
	050-0666	Gearbox 540 rpm complete; Ver. D & above	-

<sup>15</sup> Interchangeable with complete gearbox #050-0660.

Also, interchangeable with complete gearbox #050-0666 provided the "lift plate" #001-0176 and the "3 point side shift" #001-1231 are also ordered.

<sup>16</sup> Interchangeable with complete gearbox #050-0666 provided the "lift plate" #001-0176 and the "3 point side shift" #001-1231 are also ordered.

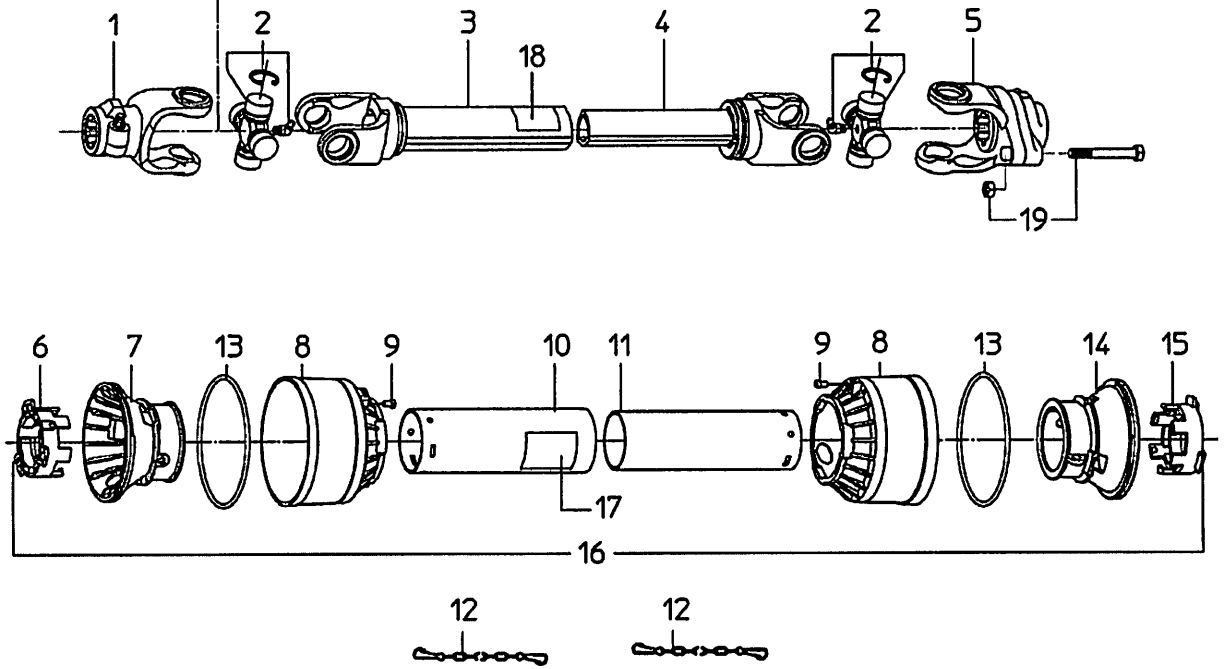
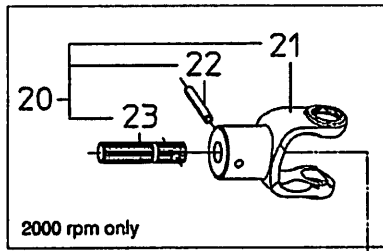




Ref.	Part #	Description	Qty.
1	001-0192	Oil seal 40.68.10	2
2	001-2149A	Bearing 6208	2
3	001-0425	Ring gear Z31, complete (2000 rpm only)	1
4	000-1106	Nut HH M12-1.75 C6 Z MD	4
5	000-1077	Washer lock Ø12 Z	2
6	003-0054	Bolt HH M12-1.75x50 C8.8 Z F	4
7	001-0177	Breather cap	1
8	001-0175	Lift plate; Ver. C & below	1
	001-0176	Lift plate; Ver. D & above	1
9	010-1215	Bolt HH M10-1.50 x 140 8.8 Z P	2
10	000-3038	Nut HH M12-1.75 C6 ZC TK	2
11	001-0171	Bolt SC M08-1.25 x 50 C8.8 Z P	8
12	001-0164	Housing w/center fill hole, gearbox; Ver. B & below	1
	001-1421	Housing w/fins w/fill hole, gearbox; Ver. C only	1
	001-1423	Housing w/fill hole, gearbox; Ver. D & above	1
13	011-0158	Hexagonal shaft 34"	-
	021-0158	Hexagonal shaft 42"	-
	031-0158	Hexagonal shaft 50"	-
14	001-0148	Spacer	1
15	330-0101	Housing w/center fill hole, gearbox; Ver. B & below	1
	005-1896	Housing w/fins w/o fill hole, gearbox; Ver. C only	1
	005-6681	Housing w/o fill hole, gearbox; Ver. D & above	1
16	003-0092	Inner cover	1
17	003-4098	Oil seal 40.60.10	1
18	003-0094	Bearing 6306	1
19	001-0143	Outer cover, upper left	1
20	002-6329	Bolt HH M10-1.50x45 C8.8 Z F	1
21	001-0118	Sprocket Z9 (2000 rpm only)	1
22	001-0122	Snap ring, outer Ø30	1
23	001-0119	Sprocket Z22 (2000 rpm only)	1
24	004-2122	Snap ring, outer Ø35	3
25	001-0727	Breather cap; Ver. B & below	1
26	000-8601	Gasket, breather cap; Ver. B & below	1
27	000-1806	Nut HH M08-1.25 C6 Z TK	8
28	007-6106	Washer fender Ø12 Z	4
29	001-0168	Front cover, gearbox	1
30	003-4196	Shim Ø35x45x2.5	2
31	000-2295	Oil seal 35.62.10	1
32	002-5332A	Bearing 6207	2
33	001-0435	Spacer (2000 rpm only)	1
34	001-0429	Pinion gear (2000 rpm only)	1
35	003-0156	Nut PT M10-1.50 C6 Z TK	2
36	001-1124	Chain ASA 60Ex47 (2000 rpm only)	1
	001-0126	Chain link, master ASA 60E (2000 rpm only)	-
	001-1111	Chain link, inner ASA 60E (2000 rpm only)	-
	001-1112	Chain link, false ASA 60E (2000 rpm only)	-
37	003-3176	Bolt HH M10-1.50x25 C8.8 Z F	3
38	000-1280	Washer lock Ø10 Z	4
39	000-1279	Nut HH M10-1.50 C6 Z TK	4
40	000-1177	Nut HH M14-2.00 C6 Z MD	2
41	000-2034	Washer flat Ø10 Z	4
42	001-1201	Support, guard	1
	050-0603	Gearbox 2000 rpm complete; Ver. B & below <sup>17</sup>	-
	050-0661	Gearbox 2000 rpm complete; Ver. C only <sup>18</sup>	-
	050-0667	Gearbox 2000 rpm complete; Ver. D & above	-

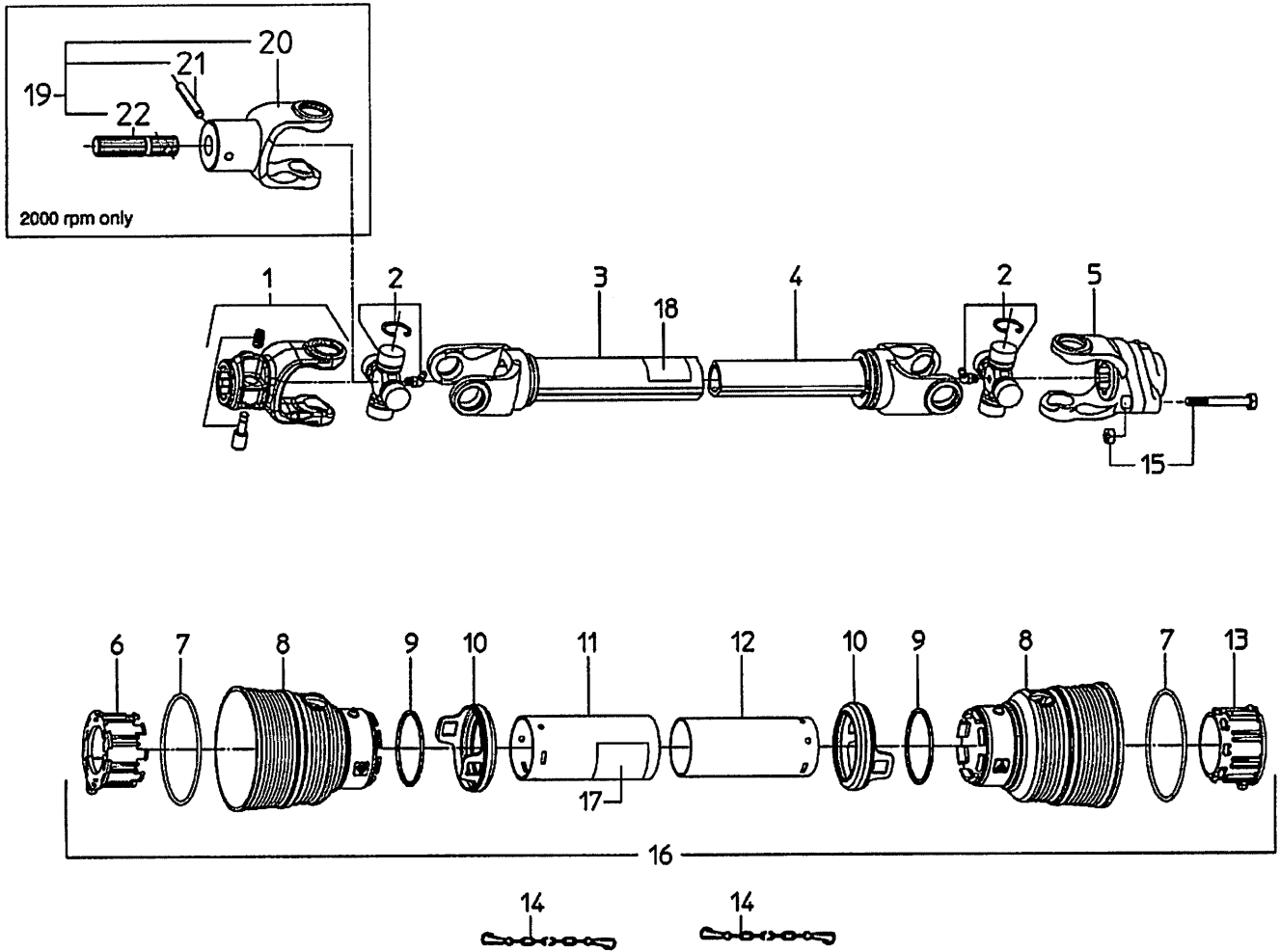
<sup>17</sup> Interchangeable with complete gearbox #050-0661.  
Also, interchangeable with complete gearbox #050-0667 provided the "lift plate" #001-0176 and the "3 point side shift" #001-1231 are also ordered.

<sup>18</sup> Interchangeable with complete gearbox #050-0667 provided the "lift plate" #001-0176 and the "3 point side shift" #001-1231 are also ordered.

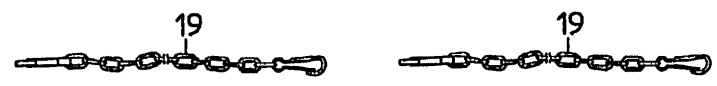
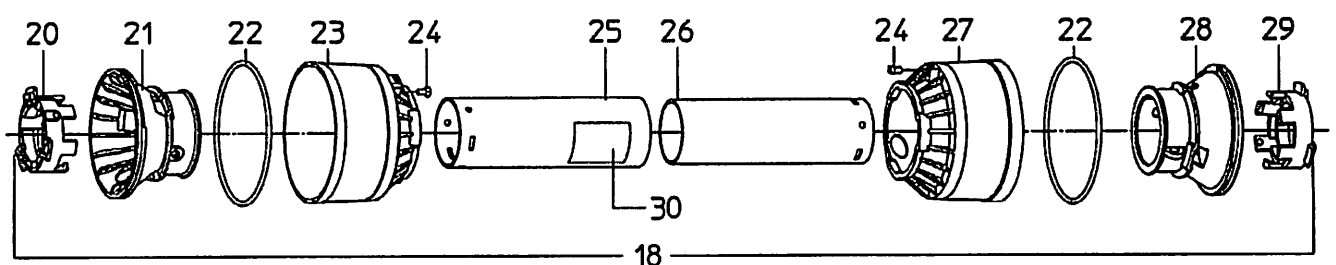
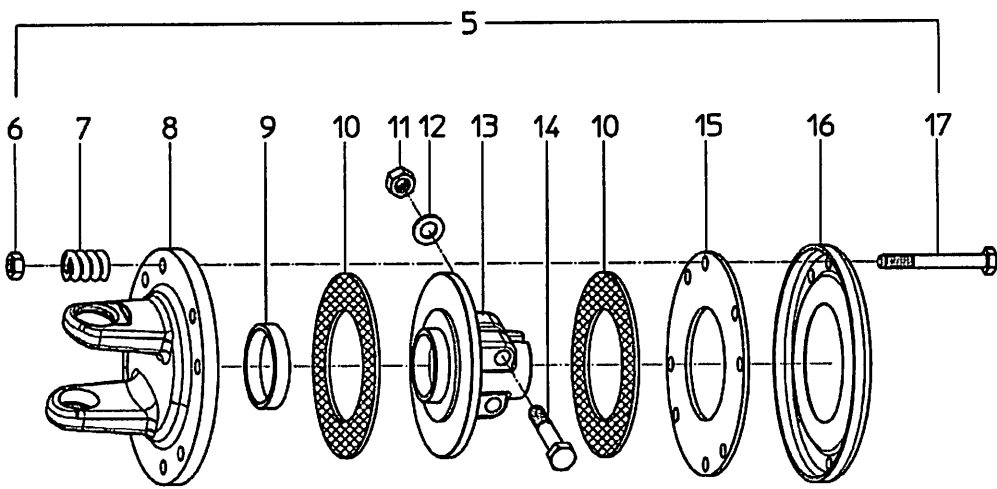
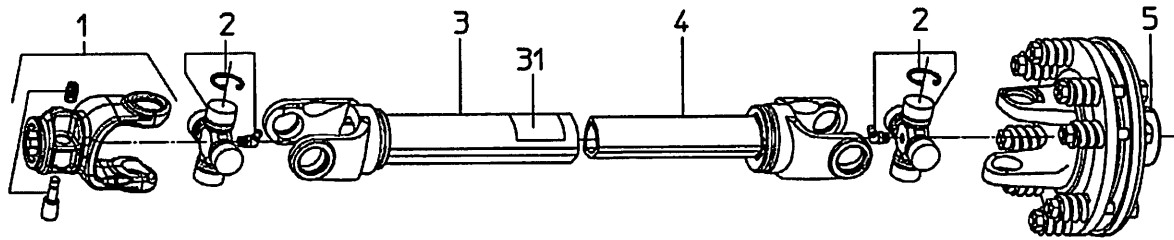


Ref.	Part #	Description	Qty.
1	1022010C	Yoke w/push pin (tractor end)	1
2	1002020C	Cross w/bearing	2
3	1942035NC	Outer tube w/yoke	1
4	1952037NC	Inner tube w/yoke	1
5	1482037C	Yoke w/shear bolt (implement end)	1
6	1782210C	Locking ring, outer tube; #292440 & below	1
7	1784201C	Rigid cone, outer tube; #292440 & below	1
8	1784203C	Standard cone	2
9	1784212C	Pin PTO shield	2
10	1773033C	Shield, outer tube	1
11	1872033C	Shield, inner tube	1
12	1006065C	Chain, anti-rotation	2
13	1213233C	Stiffening ring; #292440 & below	2
14	1784202C	Rigid cone, inner tube; #292440 & below	1
15	1782211C	Locking ring, inner tube; #292440 & below	1
16	90SS2033C	Shield, complete <sup>19</sup>	1
17	950-463B	Decal "Danger rotating PTO", outer shield	1
18	950-464B	Decal "Danger guard missing on driveline", outer tube	1
19	6690640C	Shear bolt M06-1.00x40 C8.8 N P & nut PT M06-1.00	1
20	1702215C	Yoke w/shaft 1" Z15 (2000 rpm only) - T30-5XX	1
21	1702415C	Yoke 1" Z15 (2000 rpm only) - T30-5XX	1
22	002-6342	Roll pin Ø8x50 (2000 rpm only) - T30-5XX	1
23	1002015C	Shaft 1" Z15 (2000 rpm only) - T30-5XX	1
	050-0406	Driveline w/shear bolt complete (540 rpm) - T30-1XX	-
	050-0463	Driveline w/shear bolt complete (2000 rpm only) - T30-5XX	-

<sup>19</sup> Complete shielding is interchangeable with part #96SS2033C. Single shield components are not interchangeable.

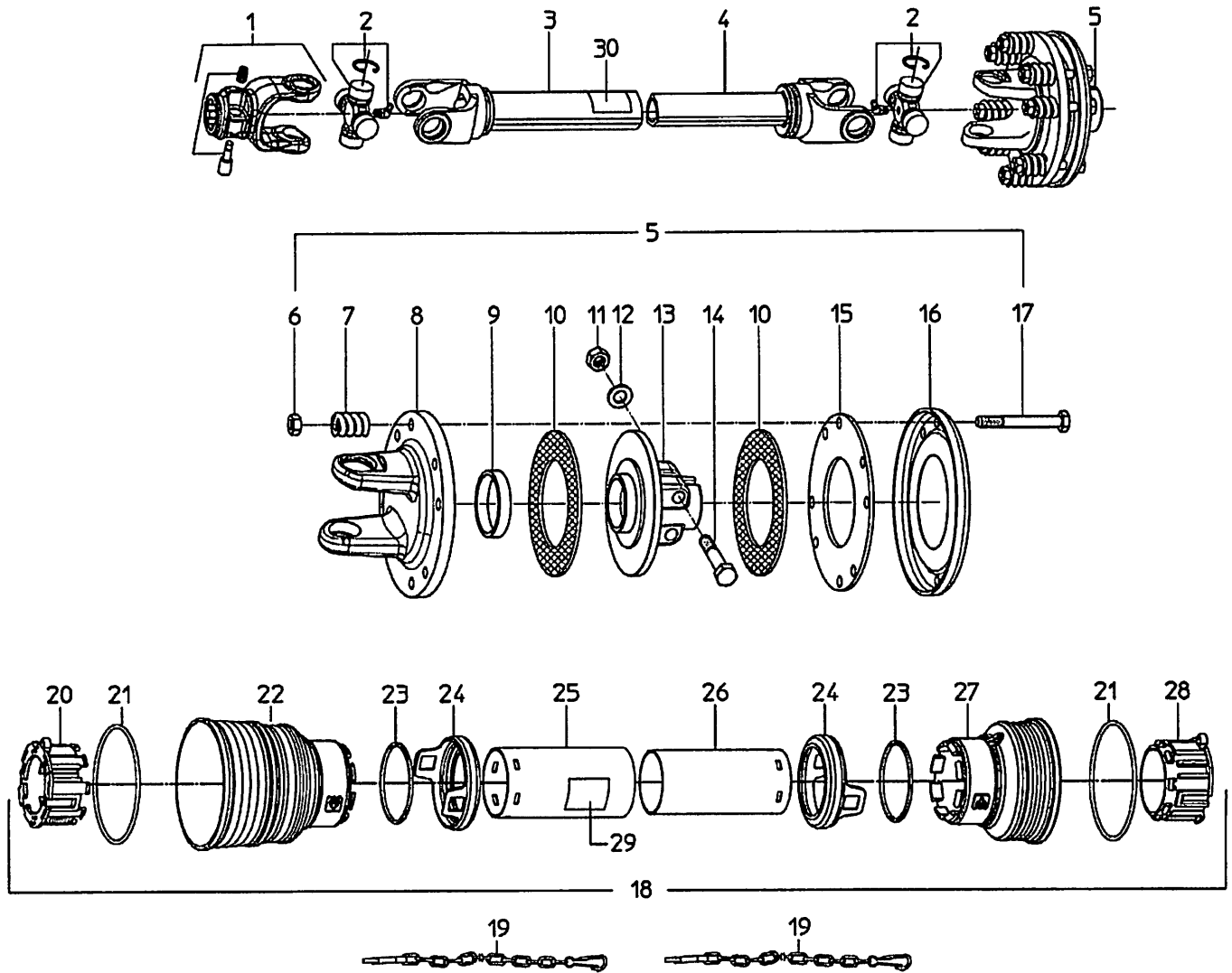


Ref.	Part #	Description	Qty.
1	1022010C	Yoke w/push pin (tractor end)	1
2	1002020C	Cross w/bearing	2
3	1942035NC	Outer tube w/yoke	1
4	1952037NC	Inner tube w/yoke	1
5	1482037C	Yoke w/shear bolt (implement end)	1
6	1782710C	Locking ring, outer tube; #292441 & above	1
7	1211733C	Stiffening ring; #292441 & above	2
8	1781703C	Standard cone; #292441 & above	2
9	1211735C	Safety ring; #292441 & above	2
10	1881709C	Safety sleeve; #292441 & above	2
11	1773033C	Shield, outer tube	1
12	1872033C	Shield, inner tube	1
13	1782711C	Locking ring, inner tube; #292441 & above	1
14	1006065C	Chain, anti-rotation	2
15	6690640C	Shear bolt M06-1.00x40 C8.8 N P & nut PT M06-1.00	1
16	96SS2033C	Shield, complete	1
17	950-463B	Decal "Danger rotating PTO", outer shield	1
18	950-464B	Decal "Danger guard missing on driveline", outer tube	1
19	1702215C	Yoke w/shaft 1" Z15 (2000 rpm only) - T30-5XX	1
20	1702415C	Yoke 1" Z15 (2000 rpm only) - T30-5XX	1
21	002-6342	Roll pin Ø8x50 (2000 rpm only) - T30-5XX	1
22	1002015C	Shaft 1" Z15 (2000 rpm only) - T30-5XX	1
	050-0406	Driveline w/shear bolt complete (540 rpm); T30-1XX	-
	050-0463	Driveline w/shear bolt complete (2000 rpm only); T30-5XX	-



Ref.	Part #	Description	Qty.
1	1023010C	Yoke w/push pin (tractor end)	1
2	1003020C	Cross w/bearing	2
3	1943043NC	Outer tube w/yoke	1
4	1953045NC	Inner tube w/yoke	1
5	1333030C	Slip clutch, complete (implement end)	1
6	003-0156	Nut PT M10-1.50 C6 Z TK	8
7	1215012C	Spring, slip clutch	8
8	1703130C	Yoke, slip clutch	1
9	1704017C	Bushing, slip clutch	1
10	1804000C	Friction disc	2
11	000-1075	Nut HH M12-1.25 C6 Z TK	2
12	000-1077	Washer, lock Ø12 Z	2
13	1704016C	Hub w/flange, slip clutch	1
14	003-4270	Bolt HH M12-1.25x65 C8.8 Z P	2
15	1134008C	Inner disc	1
16	1134007C	Outer flange	1
17	001-5232	Bolt HH M10-1.50x75 C8.8 Z P	8
18	90SE4041C	Shield, complete <sup>20</sup>	1
19	1006065C	Chain, anti-rotation	2
20	1784210C	Locking ring, outer tube; #280017 & below	1
21	1784201C	Rigid cone, outer tube; #280017 & below	1
22	1213233C	Stiffening ring; #280017 & below	2
23	1784203C	Standard cone; #280017 & below	1
24	1784212C	Pin; #280017 & below	2
25	1773041C	Shield, outer tube	1
26	1872041C	Shield, inner tube	1
27	1784207C	Extra short cone; #280017 & below	1
28	1784202C	Rigid cone, inner tube; #280017 & below	1
29	1784211C	Locking ring, inner tube; #280017 & below	1
30	950-463B	Decal "Danger rotating PTO", outer shield	1
31	950-464B	Decal "Danger guard missing on driveline", outer tube	1
	050-0408	Driveline w/slip clutch, complete; T30-2XX	-

<sup>20</sup> Complete shielding is interchangeable with part #96SE4041C. Single shield components are not interchangeable.





Ref.	Part #	Description	Qty.
1	1023010C	Yoke w/push pin (tractor end)	1
2	1003020C	Cross w/bearing	2
3	1943043NC	Outer tube w/yoke	1
4	1953045NC	Inner tube w/yoke	1
5	1333030C	Slip clutch, complete (implement end)	1
6	003-0156	Nut PT M10-1.50 C6 Z TK	8
7	1215012C	Spring, slip clutch	8
8	1703130C	Yoke, slip clutch	1
9	1704017C	Bushing, slip clutch	1
10	1804000C	Friction disc	2
11	000-1075	Nut HH M12-1.25 C6 Z TK	2
12	000-1077	Washer, lock Ø12 Z	2
13	1704016C	Hub w/flange, slip clutch	1
14	003-4270	Bolt HH M12-1.25x65 C8.8 Z P	2
15	1134008C	Inner disc	1
16	1134007C	Outer flange	1
17	001-5232	Bolt HH M10-1.50x75 C8.8 Z P	8
18	96SE4041C	Shield, complete	1
19	1006065C	Chain, anti-rotation	2
20	1784710C	Locking ring, outer tube; #280018 & above	1
21	1211733C	Stiffening ring; #280018 & above	2
22	1781703C	Standard cone; #280018 & above	1
23	1211735C	Stop ring; #280018 & above	2
24	1881709C	Safety sleeve; #280018 & above	2
25	1773041C	Shield, outer tube	1
26	1872041C	Shield, inner tube	1
27	1781701C	Extra short cone; #280018 & above	1
28	1784711C	Locking ring, inner tube; #280018 & above	1
29	950-463B	Decal "Danger rotating PTO", outer shield	1
30	950-464B	Decal "Danger guard missing on driveline", outer tube	1
	050-0408	Driveline w/slip clutch, complete;T30-2XX	-

---

**BEFCO®**

P.O. Box 6036  
Rocky Mount, NC 27802-6036  
Tel.: 252.977.9920 - Fax: 252.977.9718  
[www.befco.com](http://www.befco.com)

